

TO ALL THOSE THAT SAY...

This year I accepted two remarkable cellists into my studio. This is not to say that all nine of my students are not remarkable - they are all very special. The remarkable thing about Gail Boothe and Dr. David Smith is that they both began to play the cello in their adulthood. Both highly-trained professionals, Gail, a nurse, and David, a retired ophthalmologist, started in the last five years, take regular lessons, and practice with dedication. While David enjoys playing the classics, including famous themes by Beethoven, Dvořák and Brahms, Gail has just mastered the theme from "Swan Lake", plays in the Icicle Creek Academy Orchestra and likes to work through the Suzuki books and position study exercises. Even though both have commented that starting the cello was no cinch, both players truly sound beautiful, sight-read well and have experienced exciting improvements during the year due to their hard work and commitment. I would like to pay tribute to Gail and David, as I meet so many people who tell me that they love the cello, piano, violin or tuba, and wish they had learned an instrument, but they often say that it's too late. Think again, ye budding musicians - take courage - music is for everyone, and here are your role-models - sit down and express yourself!

Dr. Sally Singer

ICICLE CREEK AWAY: UPCOMING DATES

Lisa Bergman and Sally Singer will join Jerry Kracht, Maria Sampen and Charles Robert Stephens for the final concert of the Tacoma Second City Chamber Series under the Artistic Directorship of Jerry Kracht, who completes his 30th year in the position. Kracht's own Mahler and Strauss transcriptions will be featured, written for this group, as well as the beautiful Piano Trio in Bb by Schubert. The concert will take place at the Annie Wright School, Tacoma, May 11th at 7:30 PM.

In a special engagement, Oksana and Sally have been invited and will perform at the Governor's mansion in Olympia on June 18th for Governor Christine Gregoire. They will feature works from the Season Finale April 7th Canyon Wren concert, as well as solo works for piano.

CELLO SUCCESS AT THE STATE-WIDE SOLO AND ENSEMBLE COMPETITION

This year, all three of the cellists that entered the region's Solo and Ensemble Competition from Sally Singer's studio received the mark of "Superior". They were Robin Tangren from Eastmont High School, Rachel Woolsey from Wenatchee High School and Emalee Whiteman from Eastmont Junior High. Emalee was then selected as the winner of her category, and goes on to compete at the State Round at Central Washington University on April 28th. Good luck to Emalee, and congratulations to all three cellists for their hard work and success!

Emalee
Whiteman,
Cellist

"Music is really what I need in my life. Even if you go through really tough patches with your instrument, just keep hanging on. It will pay off in the long run. I promise you!"

WOULD YOU CONSIDER...

Sponsoring a Festival Artist?
An Institute Student? A Concert?
Becoming a Member of the Artistic
Director's Circle?

To learn more about these opportunities,
including exclusive Artistic Director's
Circle events and other benefits, contact
Executive Director Lisa Bergman at
509.548.6347 ext. 404.

ICICLE CREEK SUMMER 2007 *Educational Programs*

ICICLE CREEK SUMMER SYMPHONY



This year, **Summer Symphony** will have some exciting changes from previous years. Featuring some new, dynamite faculty, a more intensive musical focus, as well as loads of summer fun, this year's week-long program, created for musicians of all levels, and running from June 25-30th on the Icicle Creek campus in Leavenworth, will showcase a newly-formed Honors Chamber Orchestra conducted by Icicle Creek's new Music Director and Conductor, Jeremy Briggs Roberts. Designed as a select group for the most advanced orchestral players, participants will play side by side with faculty professional players in both rehearsal and performance and will focus on several challenging works from the standard symphonic repertoire including Beethoven's Symphony No. 2 in D Major, Op. 36, and Debussy's famous and sensual masterpiece, *Prelude to the Afternoon of a Faun*. In addition, the Academy Orchestra, under Kara Hunnicutt's leadership, will tackle the challenges associated with joining a large ensemble for the first time, and finally, the Symphony Orchestra, also working with Jeremy Briggs Roberts, will provide orchestral rehearsal and performance techniques to intermediate and advanced players, and will examine Dvořák's famous Symphony No. 8 in G Major, Op. 88. Each ensemble will rehearse daily, both in full orchestral rehearsal and in sectionals. On June 30th, at 12:00 PM at the Performing Arts Center of Wenatchee, all three groups will perform their week's achievements free of charge.

For more information, faculty updates, or to receive a brochure, call (509) 548-6347, ext. 400, or check out www.icicle.org.

ICICLE CREEK CHAMBER MUSIC INSTITUTE

The **Chamber Music Institute 2007** has drawn the largest response of student applicants yet. Almost at the point when invitation and response process is complete, this program has once again caught the attention of students from all corners of the United States, as well as a healthy showing from Canada and Korea. In addition to the Icicle Creek Piano Trio, our stunning faculty includes regular favorites such as Wei He, Professor from the San Francisco Conservatory of Music and Laurent Weibel, National Symphony Orchestra, violin and Nathaniel Rosen, concert cellist and Professor at the University of Southern California. Likewise pianists Heasook Rhee, Professor at the Manhattan School of Music, Francine Kay, Professor at Princeton and Christina Dahl, Professor at Stony Brook, NY will come along with the Avalon String Quartet, now in residence at Northern Illinois University. Cellist David Russell, Professor at Wellesley College, Boston, who was first featured last year, will return by popular demand, and violist Catherine Lynn from the Atlanta Symphony, Karen Dreyfus, multi-award winning solo violist and professor from the Manhattan School of Music, and Florin Parvulescu, violinist and conductor from the San Francisco Symphony will be our exciting new artists. As well as being full-time coaches for the student chamber groups, faculty members will present public masterclasses in solo and chamber performance and give chamber performances each weekend in July. We are pleased to have many alumni students in the mix again this year, from Icicle Creek itself and also from Cleveland, Ottawa, San Francisco, North Carolina, Seattle, Indiana and beyond. Once again, Sarah Padilla will come to demonstrate the benefits of the Alexander Technique, a study in physical freedom that leads many musicians to higher performance levels, and plans for extra-musical activities such as hiking, biking and swimming are well underway.

Dr. Sally Singer, Cellist
Institute Co-Director



ICICLE CREEK CHAMBER MUSIC FESTIVAL

Tickets & Information at www.icicle.org or
call Toll free (877) 265-6026
Local calls (509) 548-6347, ext. 407

Saturday, July 7, 7:30 PM
Jovino Santos Neto Quinteto
Brazilian Jazz

Sunday, July 8, 3:00 PM
A Healing Cordial
Bach-Busoni, Prokofiev, and Smetana

Wednesday, July 11, 7:30 PM
Britten for Cello
Three Suites for Solo Cello
David Russell, Cellist

Friday, July 13, 7:30 PM
Unfettered
Brahms, Fauré, and Ginastera

Saturday, July 14, 7:30 PM
Exuberant Youth
Brahms, Takemitsu, and Mozart

Sunday, July 15, 22, 29, 2:00 PM
Chamber Institute Young Artists Concert

Friday, July 20, 7:30 PM
Music Most Poetic
Schubert, Schulman, and Grieg

Saturday, July 21, 7:30 PM
Hybrid Beauties
Mozart, Brahms, and Zhou Long

Friday, July 27, 7:30 PM
Musical Mystic
Beethoven and Messiaen

Saturday, July 28, 7:30 PM
Heartfelt Song
Schubert, Chopin, and Beethoven

Non-profit Org.
US Postage
PAID
Cashmere, WA
Permit No. 45

P.O. Box 2071
Leavenworth, WA 98826



PROGRAMS OF ICICLE CREEK:

ICICLE CREEK SUMMER SYMPHONY

June 25-30, 2007

Final Concert: June 30, 2007

ICICLE CREEK CHAMBER MUSIC FESTIVAL

July 7-29, 2007

ICICLE CREEK CHAMBER MUSIC INSTITUTE

July 7-29, 2007

ICICLE CREEK YOUTH SYMPHONY

Fall Concert: November 26, 2007

Friendraiser: December 15, 2007

LESSONS

RETREATS

FOR EVENT SCHEDULES AND DETAILS,
GO TO WWW.ICICLE.ORG

An independent, 501(c)3 non-profit organization not affiliated with any commercial enterprise, Icicle Creek is supported by contributions, sponsorships and donations from individuals, corporations, foundations and organizations and does not discriminate on the basis of race, color, national or ethnic origin.

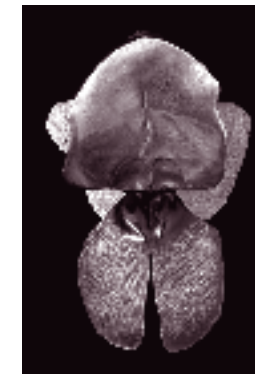


Notes from the Artistic Director

Icicle Creek Music Center has had throughout its history a tradition of connection with the visual arts. Our Leavenworth neighborhood is graced with working artists of all sorts, many of whom contribute to our programs as concert volunteers, sponsors, audience members or as parents of music students. We enjoy the stimulating

interactions fostered through our participation in the Icicle Fund, a catalyst for growth and relationship-building between all of the arts and environmental projects of the region. And of course, the Icicle Creek office has happily provided a home for the Watershed Art collection of paintings, photographs and sculptures destined to move to a permanent home at Barn Beach Reserve, another sibling in the Icicle Fund family.

Inspired by the pleasure I've received from the work of these artist friends, when I had the opportunity to choose how to spend some time freed from duties by a partial leave of absence this season, I signed up for classes in drawing and oil painting. An eye-opening experience, I find that I have learned much more from these classes than how to handle a pencil and oil paints with a little more skill than when I started. It is the many levels of seeing the familiar world in a new light available to a trained and attentive eye that has been the most exciting discovery. My enjoyment of the sunrise on Wedge Mountain is richer for picturing whether I would want



Accueil (Welcome), bronze by Sara Mall Jobani, Watershed Art Collection

to mix paints in a rose or a peach for the sun on the snow, and if the shadows are more lilac, or turquoise?

I recognize the same thrill in music students when they master a difficult passage, successfully shape a musical phrase as a team effort in an ensemble performance, or listen for the first time to a recording

of fabulous masterwork they are about to learn. Their attention has just opened a more detailed level of understanding than they had touched before. Music has the ability to reach inside and stir the intangible parts of human nature-memories, emotions and inspirations. It draws for us a fuller picture of who we are and who we aspire to be than we can put into words. Music, like the visual arts, enriches everyday experience with new understandings of ourselves and of the world around us.

Icicle Creek's summer season offers a full schedule of enriching opportunities. Summer Symphony, the Chamber Institute and the Chamber Music Festival fill June and July with concerts and study programs and have something to offer everyone from youngsters to seniors. We even host a theater event in August and a Plein Air oil painting retreat in September. We invite you to fill your summer with new insights by joining us for an eye-opening event at Icicle Creek.

Marcia Kaufmann,
Artistic Director

2ND ANNUAL PIANO FESTIVAL A SMASHING SUCCESS!

Finishing on Saturday night, January 13, 2007 with an exciting and packed concert featuring nine young and extremely talented virtuosi who worked hands-on with master teachers Christina Dahl and Xak Bjerken for 3 days, the Icicle Creek Music Center's 2nd Annual Piano Festival ended with great flare and panache. During their residency, Dahl and Bjerken worked both in private lessons and in public masterclasses with young artists from as near as Cashmere and as far as Ottawa, Canada to help illuminate new musical ideas and paths for these promising young pianists. In addition to teaching, Dahl, Bjerken, and Festival Director and Icicle Creek Music Center Resident Pianist Oksana Ezhokina performed a scintillating faculty recital in the beautiful Sleeping Lady Chapel on Friday night, January 12th, to a completely full house of enthusiastic listeners. In only its second year, the ICMC Piano Festival has illustrated it is a festival on the highest levels of artistic excellence and a wonderful addition to the rich musical environment already present in Leavenworth.

NEW VIOLINIST COMING TO ICICLE CREEK

Greetings from Icicle Creek's current violinist and Artistic Director, and an invitation to participate in an exciting process. While planning to stay on as Artistic Director, I am resigning from the performance and teaching portions of my workload to pursue other opportunities beginning this fall. The Trio is currently reviewing applications from a large number of wonderful candidates to join us this fall to fill the violin position in the Trio and to teach. We will be inviting the finalists to come perform at Icicle Creek this spring, and we invite you to participate in the process by attending and enjoying these concerts. Concerts will be arranged with much less advance notice than we usually try to give our audiences, so be sure you check the Icicle Creek website regularly or sign up for the email newsletter to receive notice of these exciting events as they are scheduled.

Marcia Kaufmann

ICICLE CREEK YOUTH SYMPHONY AND ACADEMY ORCHESTRA

Finishing out a year of tremendous growth and success, the Icicle Creek Youth Symphony and the Icicle Creek Academy Orchestra performed a terrific concert for a packed Performing Arts Center of Wenatchee on the evening of March 19, 2007. Under the direction of Kara Hunnicutt, the Academy Orchestra kicked off the evening's events with pieces including excerpts from Beethoven's famed Fifth Symphony, *Shenandoah*, and a Vivaldi Concerto in D. With sounds of cowboys and angry sea monsters devouring Greek heroes, the Icicle Creek Youth Symphony under the baton of new Music Director Jeremy Briggs Roberts, finished the evening's program with Massenet's *Phédre* Overture, the beautiful Fauré *Pavane*, the flowing *Intermezzo Sinfonico* from Mascagni's opera *Cavalleria Rusticana*, and John Williams's rousing *Cowboys* Overture.

The evening's musical achievements were punctuated by recognition of three graduating seniors who will be leaving the ICYS this spring. Alex Granger-Summers, concertmaster of the ICYS and recent recipient of the CFNCW's prestigious Roy Hill Scholarship, will be attending Biola University in Southern California where he will continue his musical studies. Kristin Ballinger, principal second violin, will be heading off to college in the fall, and Katie Tackman, principal bassoon, will be traveling to India before heading off to college.

Thanks to all coaches, parents, volunteers, sponsors, and staff at ICMC, Eastmont Junior High, and at the Performing Arts Center of Wenatchee for making this year a fun and challenging year of positive growth and success!

Dr. Jeremy Briggs Roberts
Music Director and Conductor,
Icicle Creek Youth Symphony



FROM THE BOARD PRESIDENT

It is a great privilege and pleasure to send you greetings on behalf of the Board of Directors of Icicle Creek Music Center. While the year is relatively young, ICMC has already enjoyed a number of great successes:

◆ **Piano Festival** - In early January, a dozen students from the U.S. and Canada joined faculty Christina Dahl, Xak Bjerkin and Oksana Ezhokina for four intensely rewarding days of lessons, masterclasses and concerts. What a fantastic way to start the year!

◆ **Canyon Wren Series** - Rossini's Barber of Seville delighted children of all ages, ICMC alumnus Anna Jensen offered a superb bass recital including the west coast premier of a work she commissioned, and the Icicle Creek Piano Trio was joined by Anna and violist Mara Gearman for an exciting concert highlighted by a stunning performance of Schubert's beloved "Trout" quintet.

◆ **Icicle Youth Symphony and Academy Orchestra** - What a thrill it was to see such a wide range of students, from elementary to high school, so thoroughly engaged in making great music! Hats off to conductors Jeremy Briggs Roberts and Kara Hunnicutt and all of the coaches who worked so very hard to make this such a positive experience for our students.

All of this and there's so much more to come! Soon you will receive a brochure for our annual Chamber Music Festival and Institute this coming July. Once again, internationally renowned performers will be joining our resident artists and gifted students from all over the world for three weeks of phenomenal music making. What a treasure it is to have the opportunity to hear chamber music performances of the highest caliber in such an intimate and beautiful setting. We invite you to join us for what we know will be a truly unique and outstanding experience.

Finally, I'd like to offer a note of thanks. No arts organization can exist without volunteers, and ICMC has been blessed over the years with outstanding ones. Whatever the task, whether helping with refreshments, moving chairs and stands, or taking tickets at the door, our volunteers not only do a great job, but they do so in a warm and friendly manner. They are truly an integral part of what makes Icicle Creek Music Center a special place, and on behalf of the Board and all of our staff, I want to extend our heartfelt thanks to them.

Warm regards,

Ken Hunnicutt,
President

HELLO, ICICLE CREEK ALUMNI!

Icicle Creek is reaching an age as an organization when the students who started out in our programs as youngsters are heading out into the world as young adults. It has been a great pleasure this season to welcome back some alumni assisting in our programs.

Whether like Hayley Neher, teaching violin and viola students and coaching Youth Symphony between a Juilliard masters degree and medical school; or Inga Zornes coaching for Youth Symphony on her way to a masters degree with emphasis in Suzuki teaching; Jason Thornton, settled back home after returning from his undergraduate and graduate studies, coaching the Youth Symphony trombone section; Alex Baldock, sharing his Peabody Conservatory graduating recital with our Canyon Wren audience; or Anna Jensen, performing her Doctoral Recital on our Canyon Wren Distinguished Alumni Series on her way to a career playing and teaching double bass, we are proud of their association with our programs because they are quality people, as well as excellent young professionals.

Whether you are finishing at a music conservatory, have stepped over to jazz or founded a rock and roll band, majored in engineering or computer science...Drop us an email at icicle@icicle.org! We'd enjoy hearing about your progress.

ICICLE CREEK YOUTH SYMPHONY CHAMBER MUSIC PROGRAM

Now in its fourth year, the ICYS chamber program is in full swing this spring. Groups include a wind quintet, a piano trio, a string trio and a string nonette (one more than an octet!). Rehearsals are underway for this concise program, which offers three Monday evening gatherings, an overnight retreat at the Icicle Creek cabins and a performance on April 28th, 11:00 AM in the Canyon Wren concert hall, ICMC. A diverse range of works will be featured, including Mozart's popular *Eine Kleine Nachtmusik*. The public is warmly invited to attend this very special concert. It can be surprising what these students can put together in less than a month, so come share in the thrill of what will be a debut chamber performance for several of the students!

Sincerest thanks to the Woods House Conservatory of Music, Wenatchee, for allowing us to hold our Monday evening rehearsals in their rooms.

Dr. Sally Singer

COMMUNITY FOUNDATION OF NORTH CENTRAL WASHINGTON GIVES ICMC GRANT FOR ACADEMY ORCHESTRA

In a generous gesture of support for ICMC's Academy Orchestra, the Community Foundation of North Central Washington has graciously donated \$3000 to provide assistance for the new year-long program. Led by Kara Hunnicutt, the Academy Orchestra was designed to meet the needs of younger string players in need of large ensemble instruction. It has taken off as a hugely popular and successful new program at ICMC. The grant given by the Community Foundation of North Central Washington will help to further the efforts of ICMC to support this worthwhile group as it continues to take hold in the region as a strong, necessary and highly beneficial music education program.

A WORD FROM THE EXECUTIVE DIRECTOR

"The welfare of each is bound up in the welfare of all" said Helen Keller. "Gifts dissolve rocks" say the French. "Your support means everything to us" say we at the Icicle Creek Music Center!

Our supporters have entered into a rich partnership with all of us at the Icicle Creek Music Center: our students, alumni, parents, faculty, guest artists and audience members.

◆ Together we can dissolve rocks (mind you, there are plenty in the Icicle Creek watershed!!)

◆ Together we can achieve excellence in music performance and education.

◆ Together we can build sustainability for this unique organization.

Recently a student from the Chamber Music Institute shared these thoughts. I invite you to absorb the enormity of these words, spoken from the heart:

"Chamber Music to me is so beautiful because so VERY few instruments can create just an ENORMOUS sound. I mean, play a Brahms string quartet and you have GIANT music that is complicated, confounding and AWESOME. As for Icicle Creek Music Center ... well ... what a blessing the location is and the trio is such a dedicated group who can truly impart to their students the joy of such personal accomplishment. Icicle Creek Music Center is a perfection location for chamber music because of the extraordinary setting.... elegant ... wild ... breathtaking ... profound."

Thank you for your continued support of the Icicle Creek Music Center! We are counting on you to help us spread the word and to bring the joy of music through performance and education to many.

YOU are the conduit for success through your contributions, your presence and your enthusiasm.

Warmly,
Lisa Bergman, *Executive Director*

Listen to Sunday Morning Classics!

Hosted by Lisa Bergman, catch this entertaining show that puts a fun and relaxed spin on beloved classics. It airs every Sunday morning from 7-10 AM on KOHO-FM 101.1. Sponsored by the Icicle Creek Music Center the broadcasts also feature live interviews of visiting and resident artists and promotional information for upcoming events on our campus.



2007 Artistic Director's Circle

Recognizing those who have made cash contributions of \$2,500 + during the calendar year.

Jane & Steve Baldock
Lisa Bergman & David Fluhrty
Harriet Bullitt
Community Foundation of North Central Washington
Eleanor Culling
Becky & Mark Curtis
Andrew & Stacy Erisman
Ken Hunnicutt
Icicle Fund
Dr. & Mrs. Chris Stahlner
WA State Arts Commission
Wilfred & Kathy Woods

Cash contributions made from April 1, 2006 to April 1, 2007.

WELLSPRING LEVEL
\$10,000 +
Harriet Bullitt
Icicle Fund

RIVER LEVEL
\$5000 - \$9999
Steve & Jane Baldock,
Cascade Auto Center
Lisa Bergman & David Fluhrty
Mark & Becky Curtis
Dr. & Mrs. Chris Stahlner
WA State Arts Commission

SUMMER RAIN LEVEL
\$2500 - \$4999
William & Becky Ballantine
Community Foundation of North Central Washington
Eleanor Culling
Andrew & Stacy Erisman
Ken Hunnicutt
Wilfred & Kathy Woods

STREAM LEVEL
\$1000 - \$2499
Andrew & Teresa Bliss
Catherine Boshaw,
Interact, Inc. & Signature
Packaging Solutions, Inc.
James F. Brown
Rafael & Louise Carrabba
Nancy R. Johnson, In Memory of
Larry Johnson
Marin Handbell Ringers
Bill & Judy Parker
Gary Potter, Potter-Stewart & Associates, Inc
Gretchen Rohde,
The Design Ranch
Mary Templin

BROOK LEVEL
\$500 - \$999
Joan Alway
Dr. & Mrs. Paul Ballinger
Donald & Nita Chapman
Clark Nuber, PS
Colonial Vista Retirement
Apartments & Assisted Living

Cordell Neher & Co.
Thomas Davies & Cynthia Neely
Francis & Harriett Dechaine
Dubuar, Lirhus & Engel LLP
Maynard Johnson
Daniel Kerlee & Carol Wollenberg
Liberty Financial Group
Liberty Orchards
Mt. Stuart Physical Therapy
James & Ann Murray
Parker Smith & Faek
Michael Patterson Architect
Dale & Camille Peterson
Peter & Audi Reinthalner
Pat & Ed Rutledge,
Eagle Creek Winery &
A Book for All Seasons
Wells Fargo
Wenatchee Valley Medical Center
The Wenatchee World

CREEK LEVEL \$250 - \$499
Ward Beattie
George Cone
D. A. Davidson & Co.
Ray Dicasparro
Chuck & Candace Egner
Dr. & Mrs. Brian Eifert
Albert & Nancy Erisman
Russ & Sheila Fode
Tom & Camille Grebb
Elling Halvorson
Marne Head
Buford & Valla Howell
Kara Hunnicutt & Cheryl Simmons
Icicle Ridge Winery
Timothy & Christina Jenkins
Rebekah Lane
Leavenworth Properties, Inc.
Mary Mains
Michael McGill
Jean & Ed Meyer
Cathy Miller
Randal & Michele Moseley
Patrick & Heather Murphy
James & Wenda O'Reilly
George & Terry Pagos
Barbara Patterson
Sally Singer
David & Grace Smith
Gerald & Lorna Tangren
Washington State Federation of
Music Clubs
Washington Trust Bank

STREAM LEVEL
\$1000 - \$2499
Andrew & Teresa Bliss
Catherine Boshaw,
Interact, Inc. & Signature
Packaging Solutions, Inc.
James F. Brown
Rafael & Louise Carrabba
Nancy R. Johnson, In Memory of
Larry Johnson
Marin Handbell Ringers
Bill & Judy Parker
Gary Potter, Potter-Stewart & Associates, Inc
Gretchen Rohde,
The Design Ranch
Mary Templin

FRIEND \$100 - \$249
Dan & Lorna Acton
Pamela Amoss
Anonymous
Randy & Cici Asplund, MD
Al & Kathy Bauman
Thomas & Brenda Baumeister
Lou & Dorothy Black
Robin Boal & Craig Root
Tom & Mall Boyd
Damian & Susie Browne
John & Susan Butruille
Meleah & Tony Butruille
Janice Carpenter
Saung-Koog & Ran-Young Cho
Columbia IPM Inc., In Memory of
Katsuo Satoh

Confluence Media
Irwin & Judy Conner
Randy Cooper & Denise Kasey
Cooper
William & Carol Forhan
Dennis & Jean Garrity
Mike & Vicki Hoffman
Susan Hoover
Amelia (Ruth) Hull
Dan & Sally Jackson
Bruce & Patricia Jensen
Dean Johnson
Ernest & Marilyn Karlstrom,
In Memory of Carl Bergman
Dr. Deb Lapo & John Ballinger
Richard & Nancy Lapo
Jon & Rosemary Lehman
Gordon & Marydell Marson
Polly McIntyre
Kristi & Joachim Morrison
Sarah Navarre
Jeff & Chris Parsons
Marguerite Rodgers Pierce
William & Frances Reese
Harold & Charlotte Rehmer,
In Memory of Carl Bergman
Tina & Dick Rieman
John & Megan Schiefelbein
Cheryll Simmons
Elizabeth & Steven Sipe
Jon & Sally Soest
Howard & Helen Stone
Karen Strom
Mary Ann Thorbeck
Clarence & Elizabeth Tinics
Louis Van Doren & Barbara
Congdon
Don & Kristen Wood
Rufus & Mary Woods

CONTRIBUTOR \$1 - \$99
Pat Brooke
Robert & Carolyn Bugert
Kurt Carlson & Rhona Barron
Cashmere Mailing House LLC
Cashmere Valley Bank
Kent & Annie Chalmers
Tomasz & Victoria Cibicki
Dr. & Mrs. Fred Deal
Robert & Colleen Derry
Richard & Rosaleen Dickinson
Bettina Emerson
Jared & Anna Johnson
Robin Jones
Liz Forrer
Leo & Karen Garcia
Karen Haire
Lee & Jeanette Heinrich
Buford & Valla Howell
Maynard Johnson
Michelle Knutson
Gene & Gloria Kupferman
Polly McIntyre
Fran Norman
Patrick & Karen Pleas
Dick & Tina Rieman
Larry & Priscilla Selden
Johanna Sparks
Karen Strom
Liz Swenson

2006 - 2007 CONCERT VOLUNTEERS
ICMC, thanks Robin Boal and Craig Root for their continued support and wonderful organizations skills as Volunteer Coordinators.

Robin Boal & Craig Root
Pat Brooke
Reed & Amy Carlson
Lois Cole
Eleanor Culling
Liz Forrer
Leo & Karen Garcia
Karen Haire
Lee & Jeanette Heinrich
Buford & Valla Howell
Maynard Johnson
Michelle Knutson
Gene & Gloria Kupferman
Polly McIntyre
Fran Norman
Patrick & Karen Pleas
Dick & Tina Rieman
Larry & Priscilla Selden
Johanna Sparks
Karen Strom
Liz Swenson

In Appreciation

Thank-you to our Sponsors and Donors

Dan & Donna Saus
Richard & Jane Slyfield
Johanna Sparks
Raymond & Betty Taylor
Marko Tubic
Phil Venditti & Yuna Min
Anne Venditti
Jeanie Yocum

IN-KIND DONORS
Steve & Jane Baldock,
Cascade Auto Center
Boudreaux Cellars
Cordell Neher & Co.
Costco Wholesale #112
Bob & Jody Duncan,
Berghof Keller
Eleanor Culling
Gretchen Daiber
Chuck & Candace Egner
David Fluhrty
Tom & Camille Grebb
Kristina Hedges
Icicle Ridge Winery
Just Roses
Family of Dorothy Knudsen
Chris & DeLis Mingo, InPrint
Warren & Julie Moyles,
La Toscana Winery
Julian Patrick
Prairie Media, Inc.
Gretchen Rohde,
The Design Ranch
Eagle Creek Winery &
A Book for All Seasons
Signature Packaging Solutions
Sleeping Lady Mountain Retreat
Jan Uchytl
Wilfred & Kathy Woods

2006 - 2007 CONCERT VOLUNTEERS
ICMC, thanks Robin Boal and Craig Root for their continued support and wonderful organizations skills as Volunteer Coordinators.

Robin Boal & Craig Root
Pat Brooke
Reed & Amy Carlson
Lois Cole
Eleanor Culling
Liz Forrer
Leo & Karen Garcia
Karen Haire
Lee & Jeanette Heinrich
Buford & Valla Howell
Maynard Johnson
Michelle Knutson
Gene & Gloria Kupferman
Polly McIntyre
Fran Norman
Patrick & Karen Pleas
Dick & Tina Rieman
Larry & Priscilla Selden
Johanna Sparks
Karen Strom
Liz Swenson